

**Interfaith Food Pantry**  
and Resource Center



# Morris County Seniors & Food Access

**Created by** : Antonio M. Albano  
**Drew University** , Dr. Lisa Jordan  
Independent Study, Spring 2019

Original slide deck edited by IFP

# What is the ELDER Index?

- The **ELDER Index** is a measure of the income that older adults need to meet their basic needs and age with dignity.
- It is specific to household size, location, housing, and health status. It includes the cost of: housing, healthcare, transportation, food, misc. essentials.

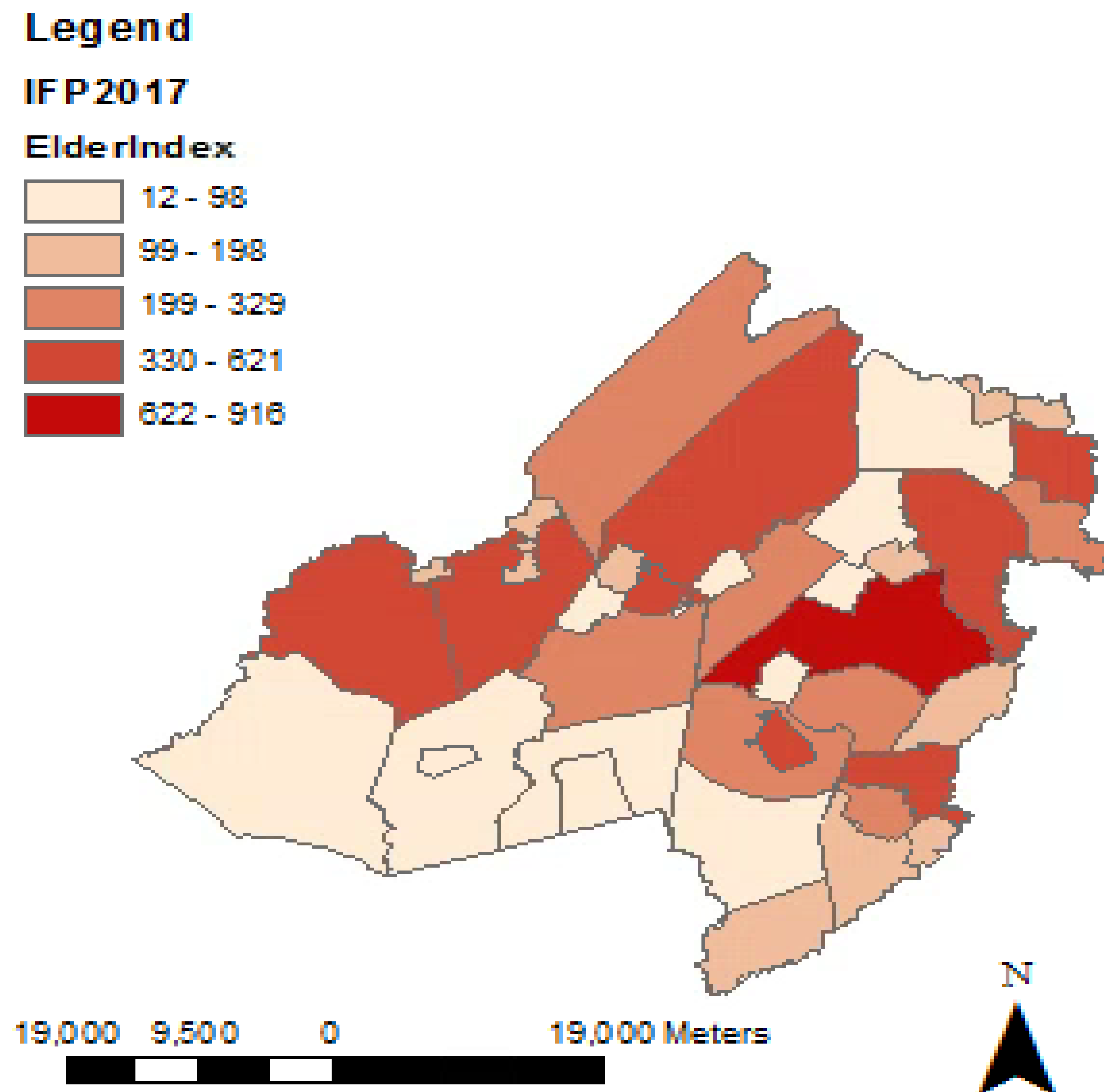
New Jersey, Morris County						
Expenses/Monthly and Yearly Totals	Single Elder			Elder Couple		
	Owner w/o Mortgage	Renter, one bedroom	Owner w/ Mortgage	Owner w/o Mortgage	Renter, one bedroom	Owner w/ Mortgage
Housing (inc. utilities, taxes & insurance)	\$1,117	\$1,091	\$2,391	\$1,117	\$1,091	\$2,391
Food	\$256	\$256	\$256	\$470	\$470	\$470
Transportation	\$185	\$185	\$185	\$286	\$286	\$286
Health Care (Good)	\$476	\$476	\$476	\$952	\$952	\$952
Miscellaneous	\$407	\$407	\$407	\$565	\$565	\$565
Index Per Month	\$2,441	\$2,415	\$3,715	\$3,390	\$3,364	\$4,664
Index Per Year	\$29,292	\$28,980	\$44,580	\$40,680	\$40,368	\$55,968

Figure 1. Table showing income levels amongst Morris County seniors.

- This information has proved incredibly useful as it's the first to identify the difficult living conditions of seniors who struggle, yet aren't officially classified as being "**hungry**" or "**in poverty**".

# Spatial identification of ELDER populations in Morris County.

Figure 2. Seniors living below the ELDER index, by municipality



# Projecting future Morris County senior populations.

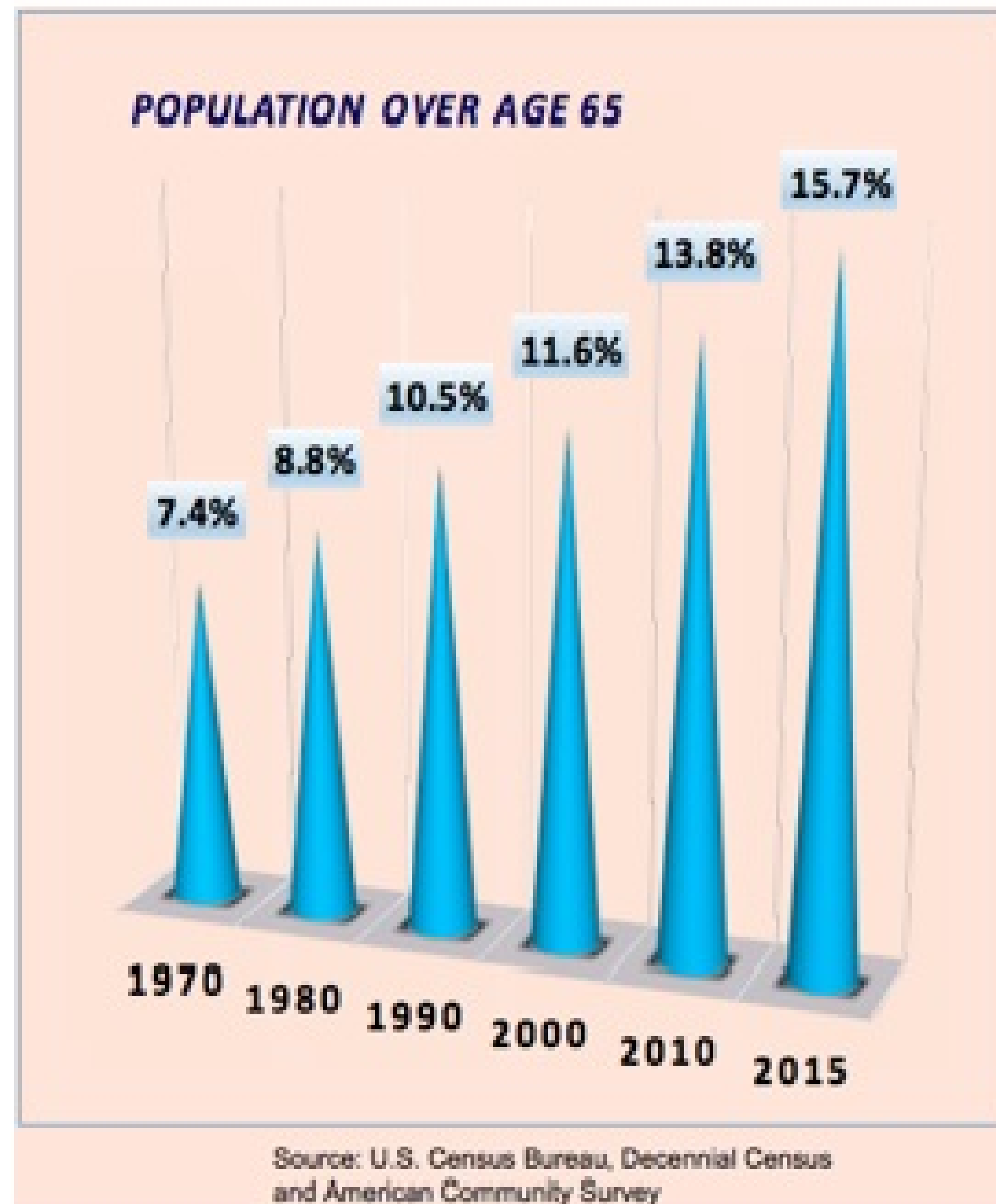


Figure 5. Chart showing an increasing percentage of seniors amongst the total Morris County population.

**82,041**

current Morris County senior pop.

**88,874**

total projected seniors in Morris County by 2035

\*calculated using  $N_t = P_e^{rt}$  & the current growth rate of .04% over the past eight years.

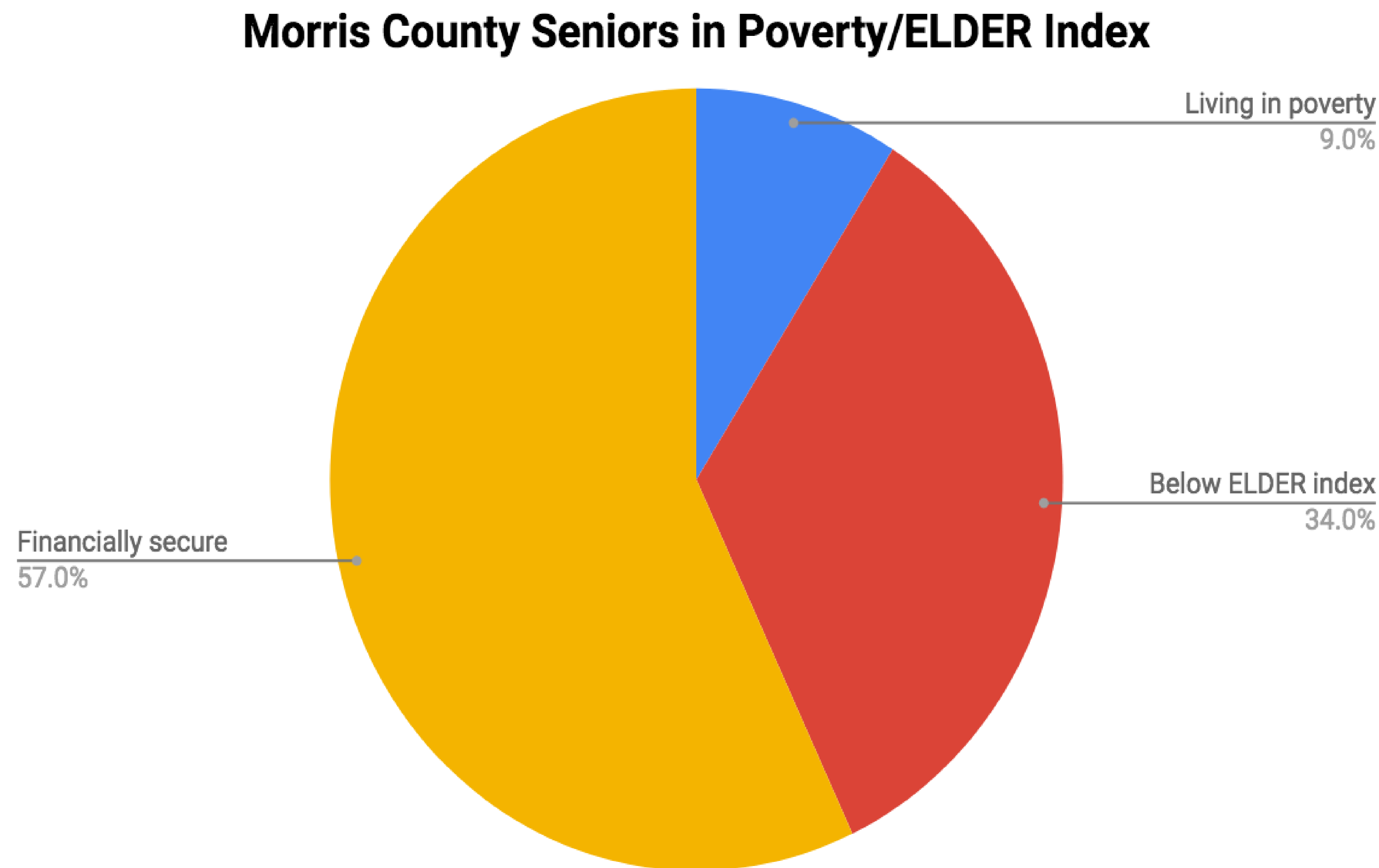


Figure . Pie graph displaying the percentages of low -income seniors in Morris County.

IFP data does not include seniors served by IFPRC's Healthy Choices Mobile Pantry Programs

**43%**

of Morris County seniors live below the **ELDER** index.

**35,278**

total Morris County seniors live below the **ELDER** index.

Municipality	Total Low-Income Seniors	Total Senior IFP Clients
Parsippany-Troy Hills Township	907	34
Dover Town	673	115
Morristown	522	188
Montville Township	440	8
Florham Park Borough	398	0
Morris Township	304	2
Madison Borough	299	22
Mt. Olive Township	454	3
Randolph Township	277	40
Pequanneck	586	0

Figure 4. Table showing the total number of seniors living below the ELDER Index vs. the # of IFP clients by municipality.



# Gender/marital status and food access.

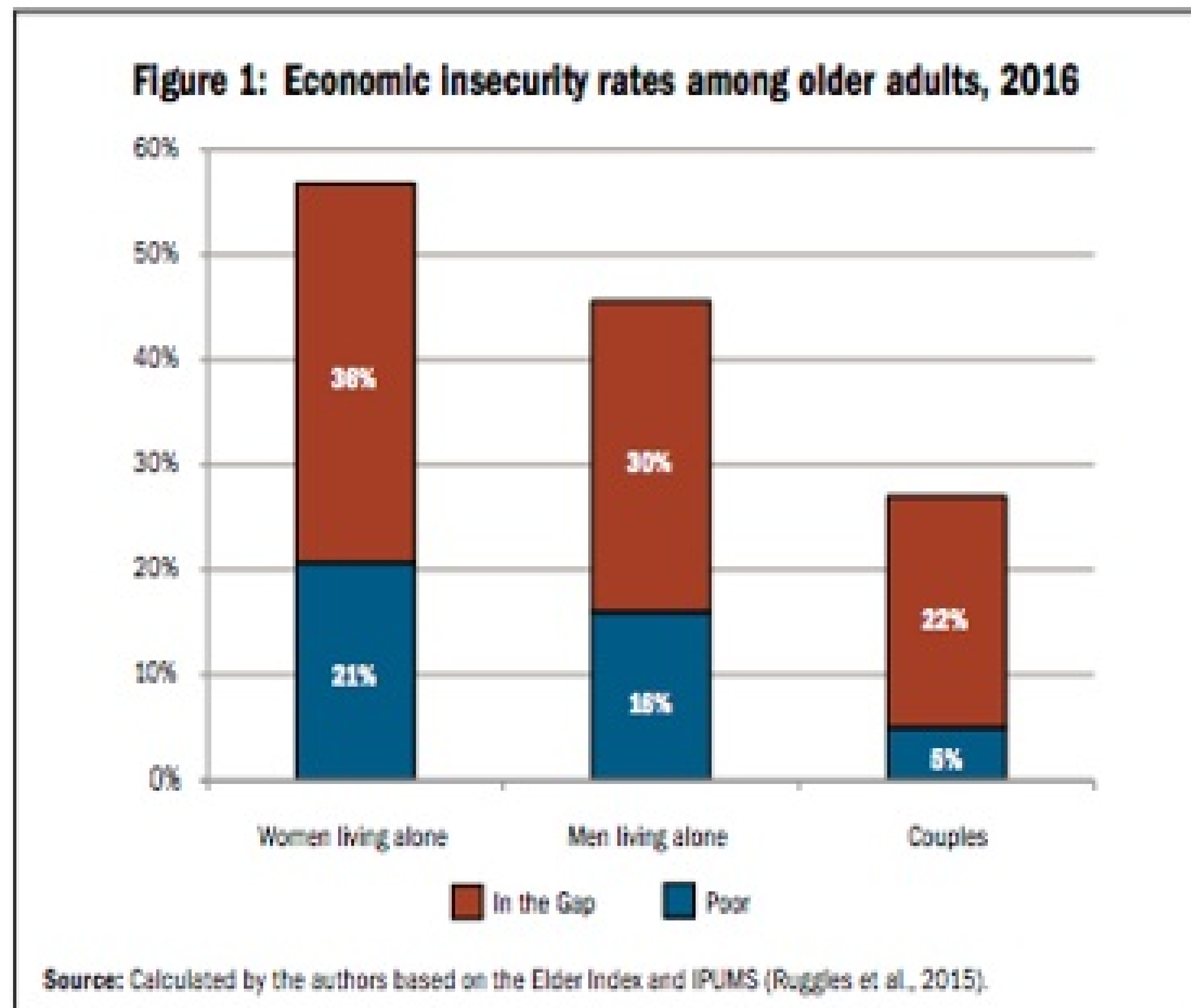


Figure 6. Chart showing economic insecurity of Morris County seniors by gender and marital status.

**$\frac{1}{3}$**  of female seniors live alone, compared to just 19% of men.

- That same  $\frac{1}{3}$  relies on **social security** for 90% or more of their total income.

**47.6%**

of senior SINGLES rely on **Social Security** for 90% or more of their total income.

**LIVING ALONE**: The loss of a spouse or partner may reduce household income, without substantially reducing household expenses.

Median **Social Security** income received is lower for single women than for single men (\$13,568 v \$15,016), with the median income for older couples being considerably higher (\$25,788).

# What other factors influence senior food access?

## 2.7%

of Morris County seniors receive **SNAP** benefits.

- Seniors make up only 16% of **total** IFP clients. The reason we may see a lower amount of seniors using the IFP:
- They may be benefiting from federal programs such as Medicare, Medicaid, and social security, allowing them to supplement their incomes (if any).
- Seniors may not have access to the IFP due to **disability**, lack of transportation, **digital illiteracy**.
- This data is important for the IFP because it aids in plan expansion for home delivery programs.

## 23.7%

of Morris County seniors live with some **disability**.

## DIGITAL LITERACY

Digital literacy presents another major barrier, as it may be very difficult for seniors to learn about pantry assistance without internet access.

Digital Literacy Amongst Morris County Seniors

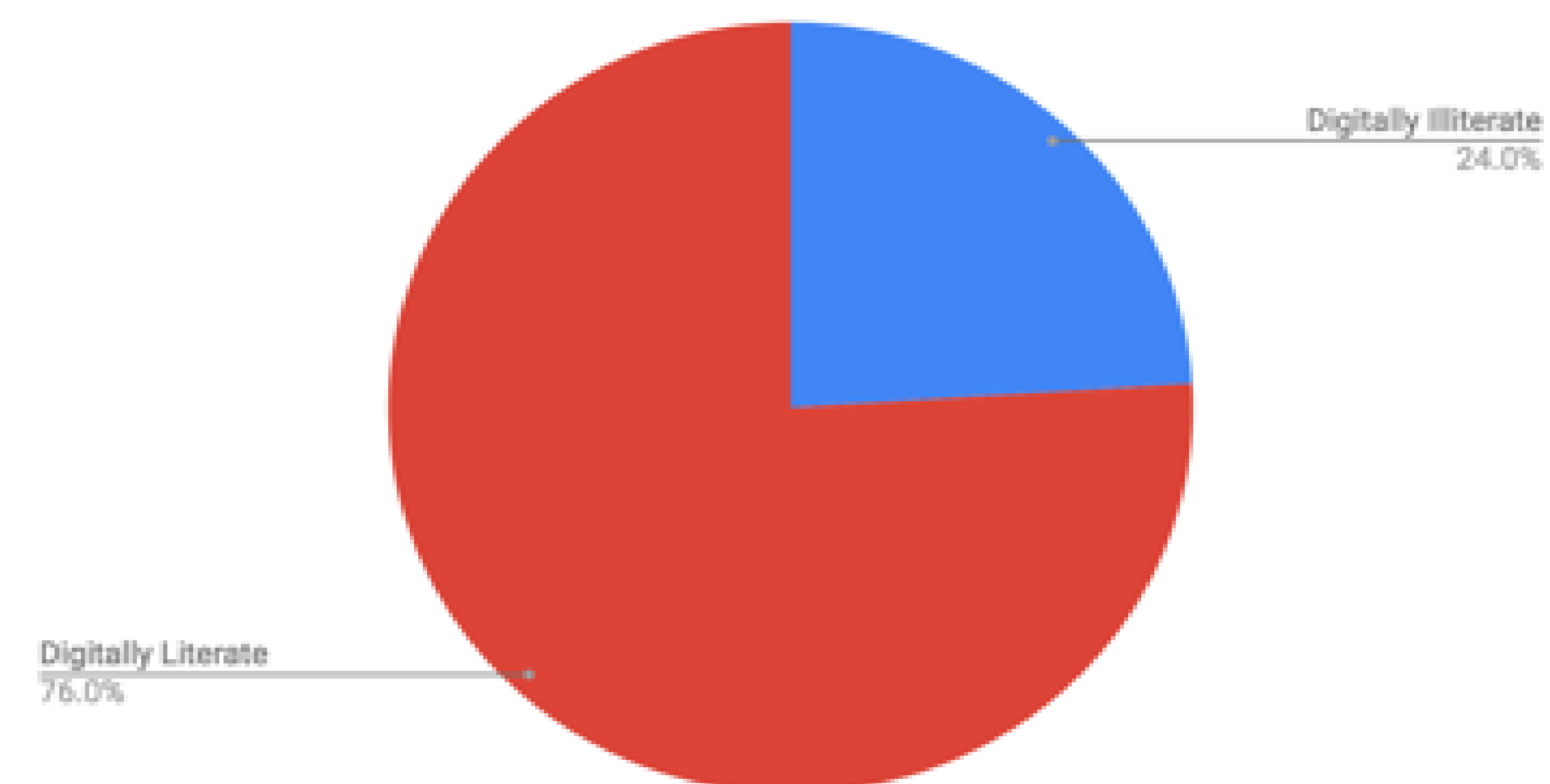


Figure 7. Pie chart showing rates of digital literacy amongst Morris County seniors.

**NOTE: IFP Data does not include Seniors served by IFPRC's Healthy Choices Mobile Pantry Program**



- All of these secondary factors combined provide insight as to how difficult it might be for seniors who are struggling the most to access the pantry's assistance: **digitally illiterate**, **without access to a vehicle**, possibly with a disability, and living **in poverty** or below the **ELDER index**.

**SOCIAL SECURITY** is the only form of income for **30%** of Morris County seniors.

## TRANSPORTATION

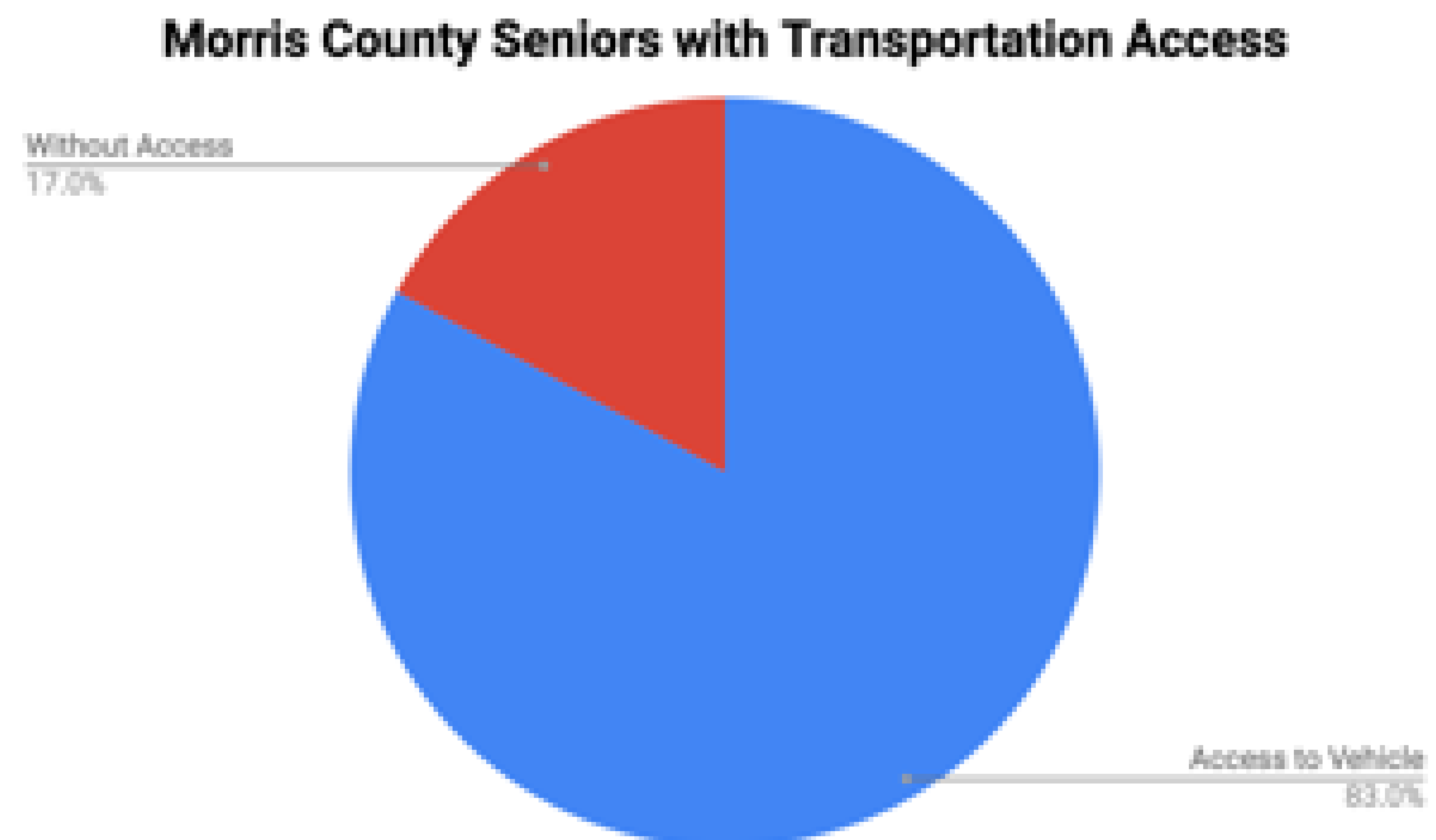


Figure 8. Pie chart displaying the percentage of Morris County seniors with/without access to a vehicle.

# Works Cited

“U.S. Census Bureau QuickFacts: Morris County, New Jersey.” *Census Bureau QuickFacts*, 2019, [www.census.gov/quickfacts/morriscountynewjersey](http://www.census.gov/quickfacts/morriscountynewjersey).

“Senior Citizens.” *Morris County Human Services*,  
[hs.morriscountynj.gov/seniors/](http://hs.morriscountynj.gov/seniors/).

JANUS Solutions. *Morris County, NJ: Demographics, Trends, and Issues*.  
2017, [morriscountynj.gov/wp-content/uploads/2017/10/StrategicPlan-DemographicsTrendsIssues.pdf](http://morriscountynj.gov/wp-content/uploads/2017/10/StrategicPlan-DemographicsTrendsIssues.pdf).

“Elder Index | Economic Security.” NCOA, 28 Apr. 2017,  
[www.ncoa.org/economic-security/money-management/elder-index/](http://www.ncoa.org/economic-security/money-management/elder-index/).

**Created by:** Antonio M. Albano  
Drew University, Dr. Lisa Jordan  
Independent Study, Spring 2019

Note Original Slide deck has been edited by IFP